

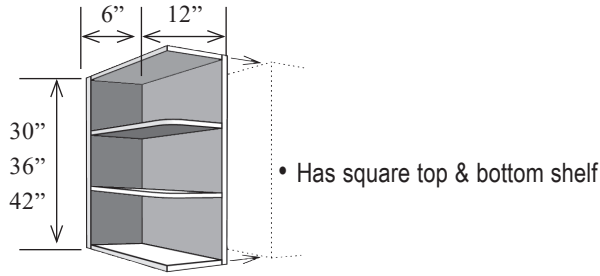


Details make the kitchen functional

End Shelves

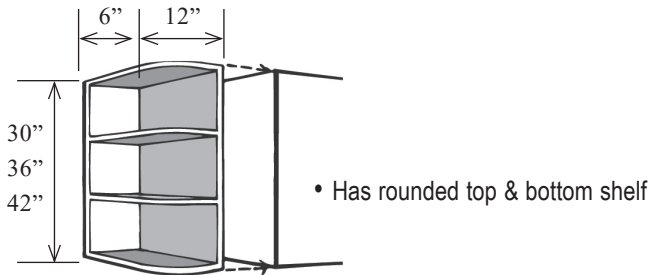
132

End Shelves



Quarter Square End Shelves

Item No.	Width	Height	Depth	Shelves
WESS30	6"	30"	12"	3
WESS36	6"	36"	12"	3
WESS42	6"	42"	12"	4



Quarter Round End Shelves

Item No.	Width	Height	Depth	Shelves
WES30	6"	30"	12"	3
WES36	6"	36"	12"	3
WES42	6"	42"	12"	4

CABINET PRICES					
Item No.	PRICE				
	Level 1	Level 2	Level 3	Level 4	Level 5
WES30	289	289	289	289	289
WES36	332	332	332	332	332
WES42	376	376	376	376	376
WESS30	284	284	284	284	284
WESS36	332	332	332	332	332
WESS42	376	376	376	376	376

PRICE VARIABLES

Wood

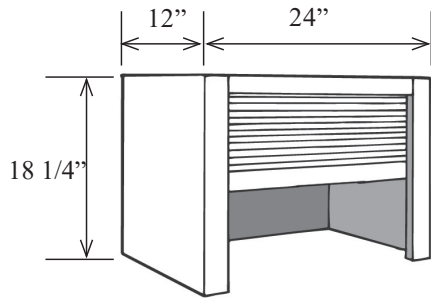
Maple Wood	No Change
Oak Wood	No Change
Cherry Wood	+12%

Finish

Stain	No Change
Stain with Glaze	Add 15%
Paint	Add 10%
Paint with Glaze	Add 20%
Paint with Rubbed Edges	Add 20%
Unfinished	-15%



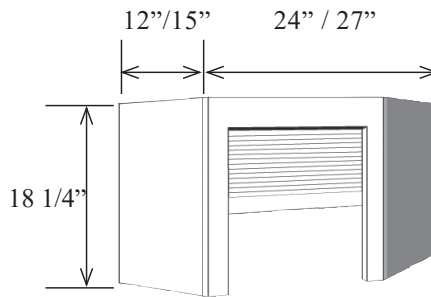
Appliance Garages & Tilt-Out Drawers



- No Modifications

Appliance garage

Item No.	Width	Height	Depth
AG24	24"	18 1/4"	12"

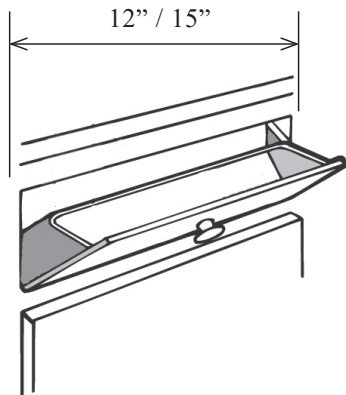


- No Modifications

Corner Appliance Garage

Item No.	Width	Height	Depth
CAG24	24"	18 1/4"	12"
CAG27	27"	18 1/4"	15"

minimum opening required



- Plastic Tray

Tilt-Out Tray

Item No.	Width
T01	10" - 20"
T02	20 1/16" - 35"

CABINET PRICES					
Item No.	PRICE				
	Level 1	Level 2	Level 3	Level 4	Level 5
AG24	811	811	811	811	811
CAG24	748	748	748	748	748
CAG27	787	787	787	787	787
T01	130	130	130	130	130
T02	180	180	180	180	180

PRICE VARIABLES

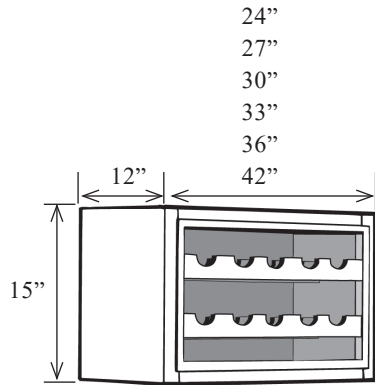
Wood

- Maple Wood No Change
- Oak Wood No Change
- Cherry Wood +12%

Finish

- Stain No Change
- Stain with Glaze Add 15%
- Paint Add 10%
- Paint with Glaze Add 20%
- Paint with Rubbed Edges Add 20%
- Unfinished -15%

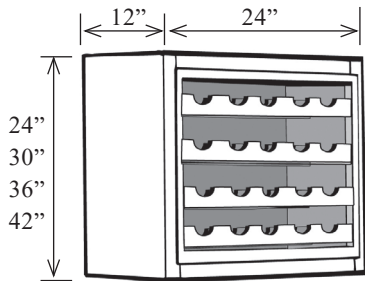
Horizontal & Verticle Wine Racks



• No Modifications on 42"W

Horizontal Wine Racks

Item No.	Width	Height	Depth	Shelves	Bottles
WHR2415	24"	15"	12"	2	10
WHR2715	27"	15"	12"	2	12
WHR3015	30"	15"	12"	2	12
WHR3315	33"	15"	12"	2	14
WHR3615	36"	15"	12"	2	14
WHR4215	42"	15"	12"	2	16



• No Modifications on 42"H

Verticle Wine Racks

Item No.	Width	Height	Depth	Shelves	Bottles
WVR2424	24"	24"	12"	3	15
WVR2430	24"	30"	12"	4	20
WVR2436	24"	36"	12"	5	25
WVR2442	24"	42"	12"	6	30

CABINET PRICES					
Item No.	PRICE				
	Level 1	Level 2	Level 3	Level 4	Level 5
WHR2415	750	750	750	750	750
WHR2715	775	775	775	775	775
WHR3015	800	800	800	800	800
WHR3315	825	825	825	825	825
WHR3615	850	850	850	850	850
WHR4215	900	900	900	900	900
WVR2424	900	900	900	900	900
WVR2430	1075	1075	1075	1075	1075
WVR2436	1250	1250	1250	1250	1250
WVR2442	1425	1425	1425	1425	1425

PRICE VARIABLES

Wood

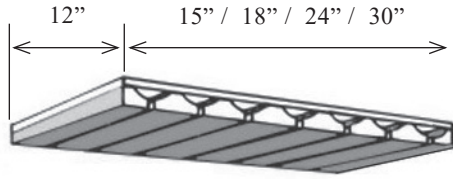
Maple Wood	No Change
Oak Wood	No Change
Cherry Wood	+12%

Finish

Stain	No Change
Stain with Glaze	Add 15%
Paint	Add 10%
Paint with Glaze	Add 20%
Paint with Rubbed Edges	Add 20%
Unfinished	-15%



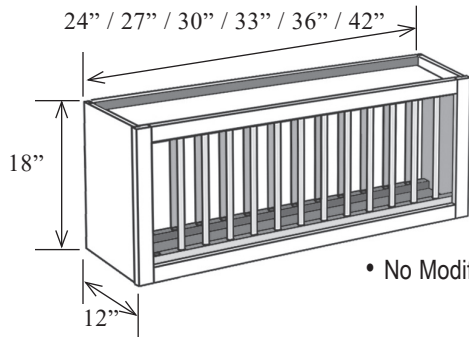
Stemware Holders & Plate Racks



• No Modifications

Stemware Holders

Item No.	Width	Depth
SG15	15"	12"
SG18	18"	12"
SG24	24"	12"
SG30	30"	12"



• No Modifications

Plate Racks

Item No.	Width	Height	Depth	Plates
WPR2418	24"	18"	12"	10
WPR2718	27"	18"	12"	12
WPR3018	30"	18"	12"	12
WPR3318	33"	18"	12"	14
WPR3618	36"	18"	12"	16
WPR4218	42"	18"	12"	18

CABINET PRICES					
	PRICE				
Item No.	Level 1	Level 2	Level 3	Level 4	Level 5
SG15	422	422	422	422	422
SG18	475	475	475	475	475
SG24	527	527	527	527	527
SG30	580	580	580	580	580
WPR2418	650	650	650	650	650
WPR2718	677	677	677	677	677
WPR3018	704	704	704	704	704
WPR3318	731	731	731	731	731
WPR3618	758	758	758	758	758
WPR4218	785	785	785	785	785

PRICE VARIABLES

Wood

Maple Wood No Change
 Oak Wood No Change
 Cherry Wood +12%

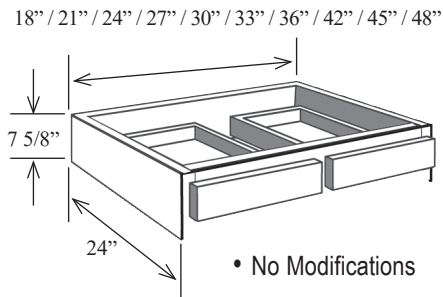
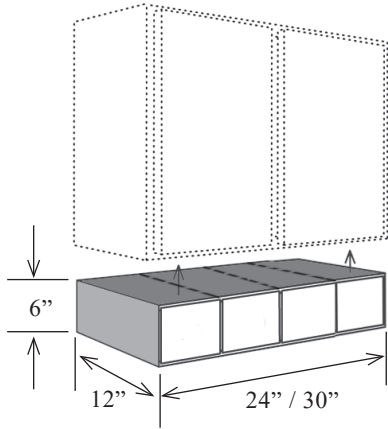
Finish

Stain No Change
 Stain with Glaze Add 15%
 Paint Add 10%
 Paint with Glaze Add 20%
 Paint with Rubbed Edges Add 20%
 Unfinished -15%

Apothecary Drawers & Desk Drawers

136

Drawers



Apothecary Drawers

Item No.	Width	Height	Depth	Drawers
HS24	24"	6"	12"	4
HS30	30"	6"	12"	5

Desk Drawers

Item No.	Width	Height	Depth	Drawers
DA18	18"	7 5/8"	24"	1
DA21	21"	7 5/8"	24"	1
DA24	24"	7 5/8"	24"	1
DA27	27"	7 5/8"	24"	1
DA30	30"	7 5/8"	24"	1
DA33	33"	7 5/8"	24"	1
DA36	36"	7 5/8"	24"	1
DA39	39"	7 5/8"	24"	2
DA42	42"	7 5/8"	24"	2
DA45	45"	7 5/8"	24"	2
DA48	48"	7 5/8"	24"	2

CABINET PRICES

Item No.	PRICE				
HS24	947				
HS30	987				
	Level 1	Level 2	Level 3	Level 4	Level 5
DA18	562	576	596	634	663
DA21	576	591	610	648	677
DA24	600	615	639	677	711
DA27	620	634	658	701	735
DA30	639	653	677	720	754
DA33	672	687	711	759	797
DA36	701	720	749	797	840
DA39	951	970	1037	1095	1143
DA42	989	1008	1053	1120	1167
DA45	1023	1052	1080	1143	1191
DA48	1053	1082	1110	1173	1221

PRICE VARIABLES

Wood

Maple Wood No Change
 Oak Wood No Change
 Cherry Wood +12%

Finish

Stain No Change
 Stain with Glaze Add 15%
 Paint Add 10%
 Paint with Glaze Add 20%
 Paint with Rubbed Edges Add 20%
 Unfinished -15%

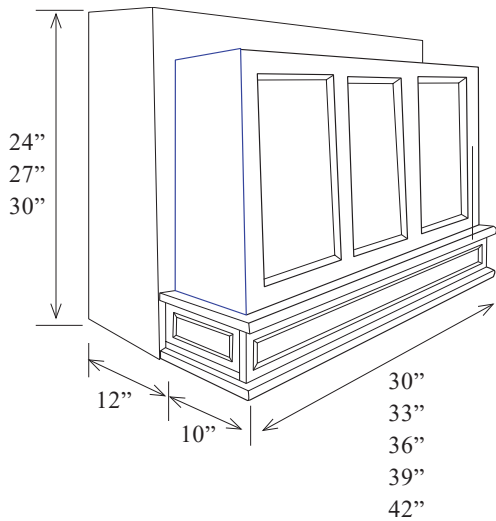
Drawer

Poplar Drawer Box-\$20 per drawer
 Maple drawer box No Change

Glides

Full Ext. Ball Bearing Glide (F)-\$40 per drawer
 Soft Close Undermount Glide (S) No Change





- Install between adjacent cabinets
- Tapered Design
- Liner not included
- No Modifications

Item No.	Width	Height
WHDA3024	30"	24"
WHDA3027	30"	27"
WHDA3030	30"	30"
WHDA3324	33"	24"
WHDA3327	33"	27"
WHDA3330	33"	30"
WHDA3624	36"	24"
WHDA3627	36"	27"
WHDA3630	36"	30"
WHDA3924	39"	24"
WHDA3927	39"	27"
WHDA3930	39"	30"
WHDA4224	42"	24"
WHDA4227	42"	27"
WHDA4230	42"	30"

DEALER RESPONSIBILITY: Check code requirements in your area when ordering hoods. Be sure to install the hood at a proper level over the range and be aware of special needs for cook tops and grills. Be sure to match hood liner width to the range width to ensure proper ventilation.

CABINET PRICES					
Item No.	Level 1	Level 2	Level 3	Level 4	Level 5
WHDA3024	1584	1647	1733	1896	2026
WHDA3324	1752	1824	1916	2098	2247
WHDA3624	1935	2012	2112	2314	2477
WHDA3924	2103	2189	2300	2520	2693
WHDA4224	2271	2362	2482	2717	2909
WHDA3027	1733	1805	1896	2079	2223
WHDA3327	1997	2079	2184	2391	2559
WHDA3627	2112	2199	2309	2530	2708
WHDA3927	2290	2381	2501	2741	2933
WHDA4227	2477	2578	2708	2967	3173
WHDA3030	1940	2016	2117	2319	2482
WHDA3330	2108	2194	2304	2525	2703
WHDA3630	2280	2372	2492	2732	2919
WHDA3930	2468	2568	2698	2957	3164
WHDA4230	2655	2765	2904	3183	3404

PRICE VARIABLES

Wood

Maple Wood No Change
 Oak Wood No Change
 Cherry Wood +12%

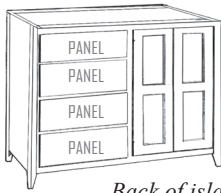
Finish

Stain No Change
 Stain with Glaze Add 15%
 Paint Add 10%
 Paint with Rubbed Edges Add 20%
 Unfinished -15%

Shaker Kitchen Island

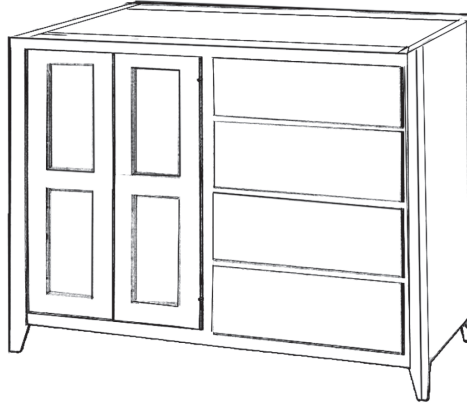
138

Designer Kitchen Islands

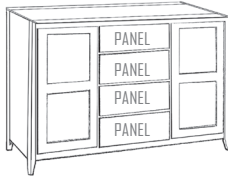


Back of island

- One adjustable shelf
- Drawers open from front only
- False panels on back
- No modifications

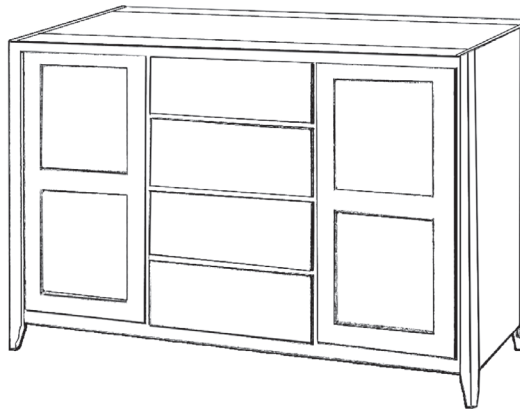


Item No.	Width	Height	Depth	Shelves	Drawers	Doors
WC_2D5101	46 1/2"	35 1/2"	23 1/4"	1	4	4



Back of island

- Two adjustable shelf
- Drawers open from front only
- False panels on back
- No modifications



Item No.	Width	Height	Depth	Shelves	Drawers	Doors
WC_2D5102	58 1/2"	35 1/2"	23 1/4"	2	4	4

CABINET PRICES	
Item No.	PRICE
WC_2D5101	4637
WC_2D5102	5392

PRICE VARIABLES

Wood

Maple Wood	No Change
Oak Wood	No Change
Cherry Wood	+12%

Finish

Stain	No Change
Stain with Glaze	Add 15%
Paint	Add 10%
Paint with Glaze	Add 20%
Paint with Rubbed Edges	Add 20%
Unfinished	-15%

Doors

Glass Prep/ Same Species Interior	Add 35%
Glass Prep Mullion	\$164 per door
Arch Door	\$26 per door
Cathedral Door	\$26 per door
Soft Close Door	\$20 per door

Drawer

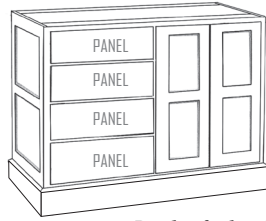
Poplar Drawer Box	-\$20 per drawer
Maple drawer box	No Change

Glides

Full Ext. Ball Bearing Glide (F)	-\$40 per drawer
Soft Close Undermount Glide (S)	No Change

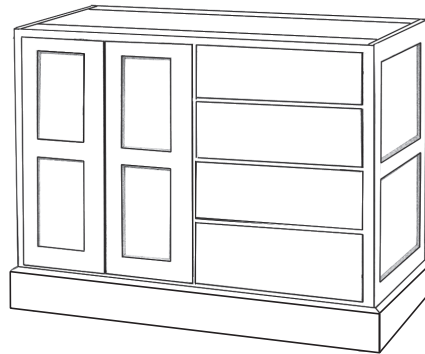


Vintage Kitchen Island

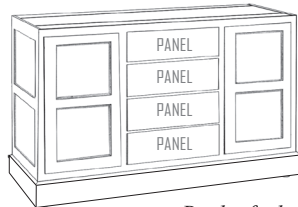


Back of island

- One adjustable shelf
- Drawers open from front only
- False panels on back
- No modifications

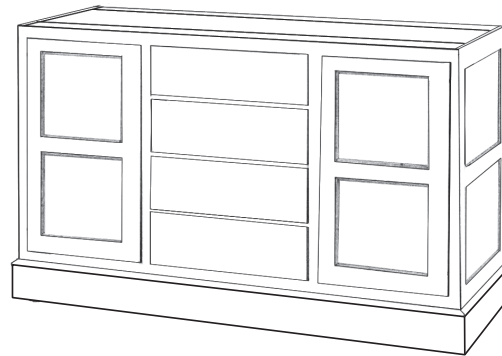


Item No.	Width	Height	Depth	Shelves	Drawers	Doors
WC_2G5101	47"	35 1/2"	24 3/4"	1	4	4



Back of island

- Two adjustable shelf
- Drawers open from front only
- False panels on back
- No modifications



Item No.	Width	Height	Depth	Shelves	Drawers	Doors
WC_2G5102	59"	35 1/2"	24 3/4"	2	4	4

CABINET PRICES	
Item No.	PRICE
WC_2G5101	5070
WC_2G5102	5841

PRICE VARIABLES

Wood

Maple Wood	No Change
Oak Wood	No Change
Cherry Wood	+12%

Finish

Stain	No Change
Stain with Glaze	Add 15%
Paint	Add 10%
Paint with Glaze	Add 20%
Paint with Rubbed Edges	Add 20%
Unfinished	-15%

Doors

Glass Prep/ Same Species Interior	Add 35%
Glass Prep Mullion	\$164 per door
Arch Door	\$26 per door
Cathedral Door	\$26 per door
Soft Close Door	\$20 per door

Drawer

Poplar Drawer Box	-\$20 per drawer
Maple drawer box	No Change

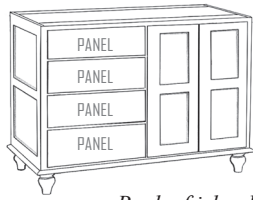
Glides

Full Ext. Ball Bearing Glide (F)	-\$40 per drawer
Soft Close Undermount Glide (S)	No Change

Cottage Kitchen Islands

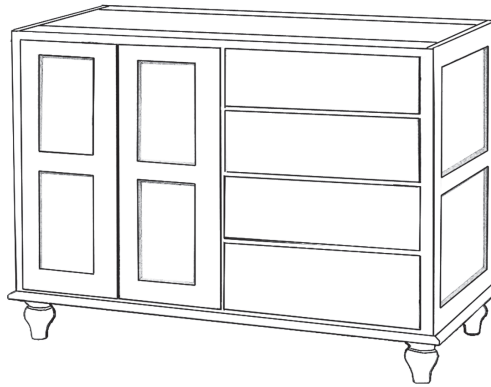
140

Designer Kitchen Islands

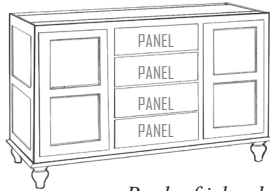


Back of island

- One adjustable shelf
- Drawers open from front only
- False panels on back
- No modifications

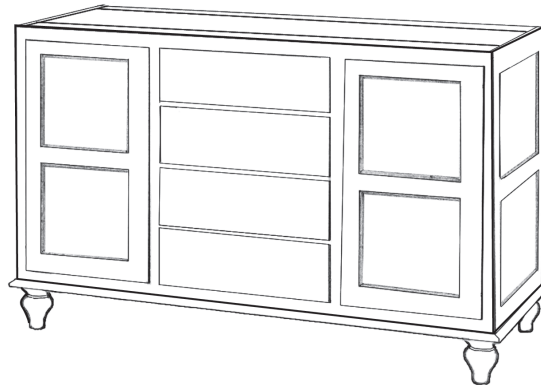


Item No.	Width	Height	Depth	Shelves	Drawers	Doors
WC_2E5101	47"	35 1/2"	24 3/4"	1	4	4



Back of island

- Two adjustable shelf
- Drawers open from front only
- False panels on back
- No modifications



Item No.	Width	Height	Depth	Shelves	Drawers	Doors
WC_2E5102	59"	35 1/2"	24 3/4"	2	4	4

CABINET PRICES	
Item No.	PRICE
WC_2E5101	5,070
WC_2E5102	5,841

PRICE VARIABLES

Wood

Maple Wood	No Change
Oak Wood	No Change
Cherry Wood	+12%

Finish

Stain	No Change
Stain with Glaze	Add 15%
Paint	Add 10%
Paint with Glaze	Add 20%
Paint with Rubbed Edges	Add 20%
Unfinished	-15%

Doors

Glass Prep/ Same Species Interior	Add 35%
Glass Prep Mullion	\$164 per door
Arch Door	\$26 per door
Cathedral Door	\$26 per door
Soft Close Door	\$20 per door

Drawer

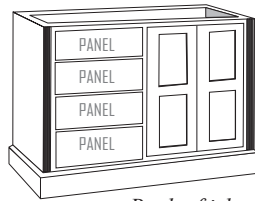
Poplar Drawer Box	-\$20 per drawer
Maple drawer box	No Change

Glides

Full Ext. Ball Bearing Glide (F)	-\$40 per drawer
Soft Close Undermount Glide (S)	No Change

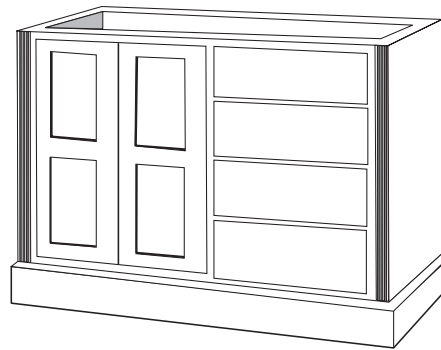


Fluted Kitchen Island

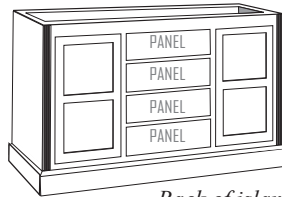


Back of island

- One adjustable shelf
- Drawers open from front only
- False panels on back
- No modifications

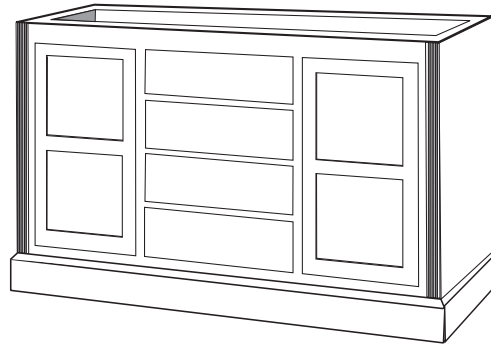


Item No.	Width	Height	Depth	Shelves	Drawers	Doors
WC_2H5101	47"	35 1/2"	24 3/4"	1	4	4



Back of island

- Two adjustable shelf
- Drawers open from front only
- False panels on back
- No modifications



Item No.	Width	Height	Depth	Shelves	Drawers	Doors
WC_2H5102	59"	35 1/2"	24 3/4"	2	4	4

CABINET PRICES	
Item No.	PRICE
WC_2H5101	4,875
WC_2H5102	5,616

PRICE VARIABLES

Wood

Maple Wood	No Change
Oak Wood	No Change
Cherry Wood	+12%

Finish

Stain	No Change
Stain with Glaze	Add 15%
Paint	Add 10%
Paint with Glaze	Add 20%
Paint with Rubbed Edges	Add 20%
Unfinished	-15%

Doors

Glass Prep/ Same Species Interior	Add 35%
Glass Prep Mullion	\$164 per door
Arch Door	\$26 per door
Cathedral Door	\$26 per door
Soft Close Door	\$20 per door

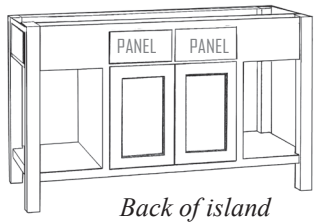
Drawer

Poplar Drawer Box	-\$20 per drawer
Maple drawer box	No Change

Glides

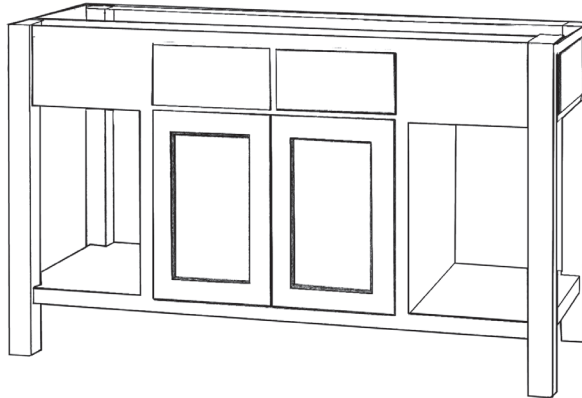
Full Ext. Ball Bearing Glide (F)	-\$40 per drawer
Soft Close Undermount Glide (S)	No Change

Open Design Kitchen Island

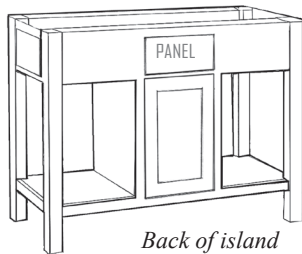


Back of island

- Two side drawers
- Front drawers open from front only
- One adjustable shelf
- False panels on back
- No modifications

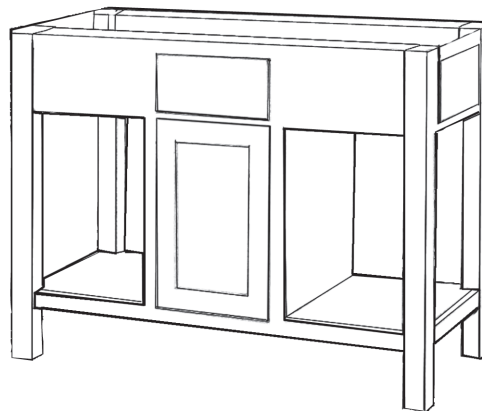


Item No.	Width	Height	Depth	Shelves	Drawers	Doors
WC_2B5104	58 1/2"	35 1/2"	22 1/4"	1	4	4



Back of island

- Two side drawers
- Front drawer opens from front only
- One adjustable shelf
- False panel on back
- No modifications
- Specify hinge left or hinge right



Item No.	Width	Height	Depth	Shelves	Drawers	Doors
WC_2B5105	46 1/2"	35 1/2"	22 1/4"	1	3	2

CABINET PRICES	
Item No.	PRICE
WC_2B5104	3,744
WC_2B5105	3,168

See Pricing Variables on opposite page.

PRICE VARIABLES

Wood

Maple Wood	No Change
Oak Wood	No Change
Cherry Wood	+12%

Finish

Stain	No Change
Stain with Glaze	Add 15%
Paint	Add 10%
Paint with Glaze	Add 20%
Paint with Rubbed Edges	Add 20%
Unfinished	-15%

Doors

Glass Prep/ Same Species Interior	Add 35%
Glass Prep Mullion	\$164 per door
Arch Door	\$26 per door
Cathedral Door	\$26 per door
Soft Close Door	\$20 per door

Drawer

Poplar Drawer Box	-\$20 per drawer
Maple drawer box	No Change

Glides

Full Ext. Ball Bearing Glide (F)	-\$40 per drawer
Soft Close Undermount Glide (S)	No Change

